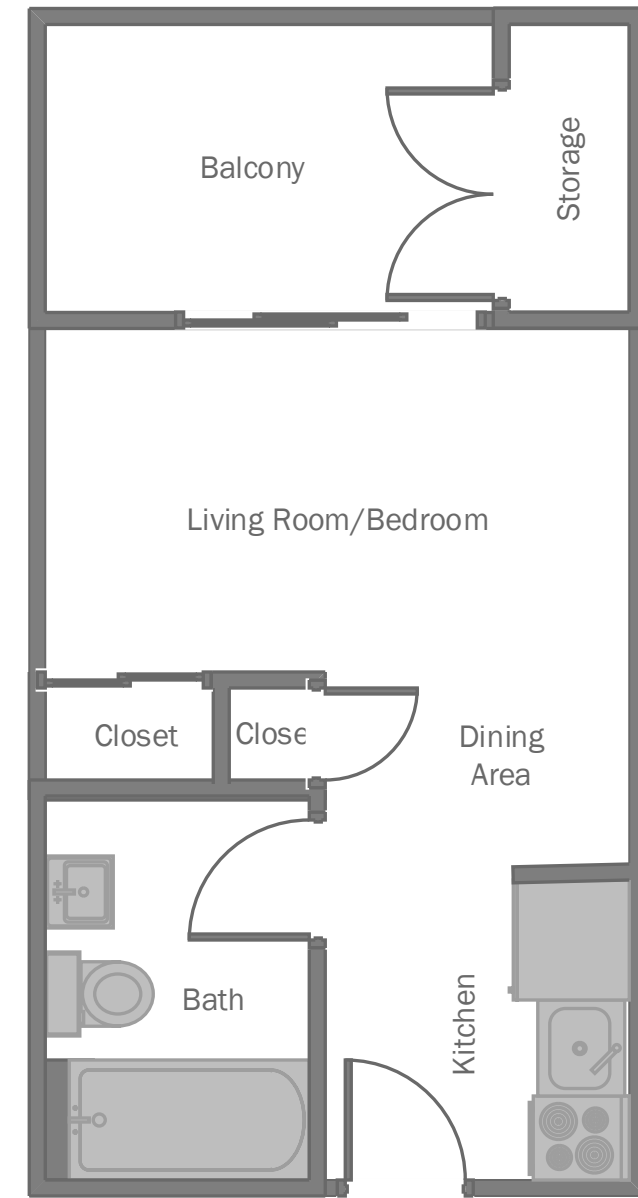
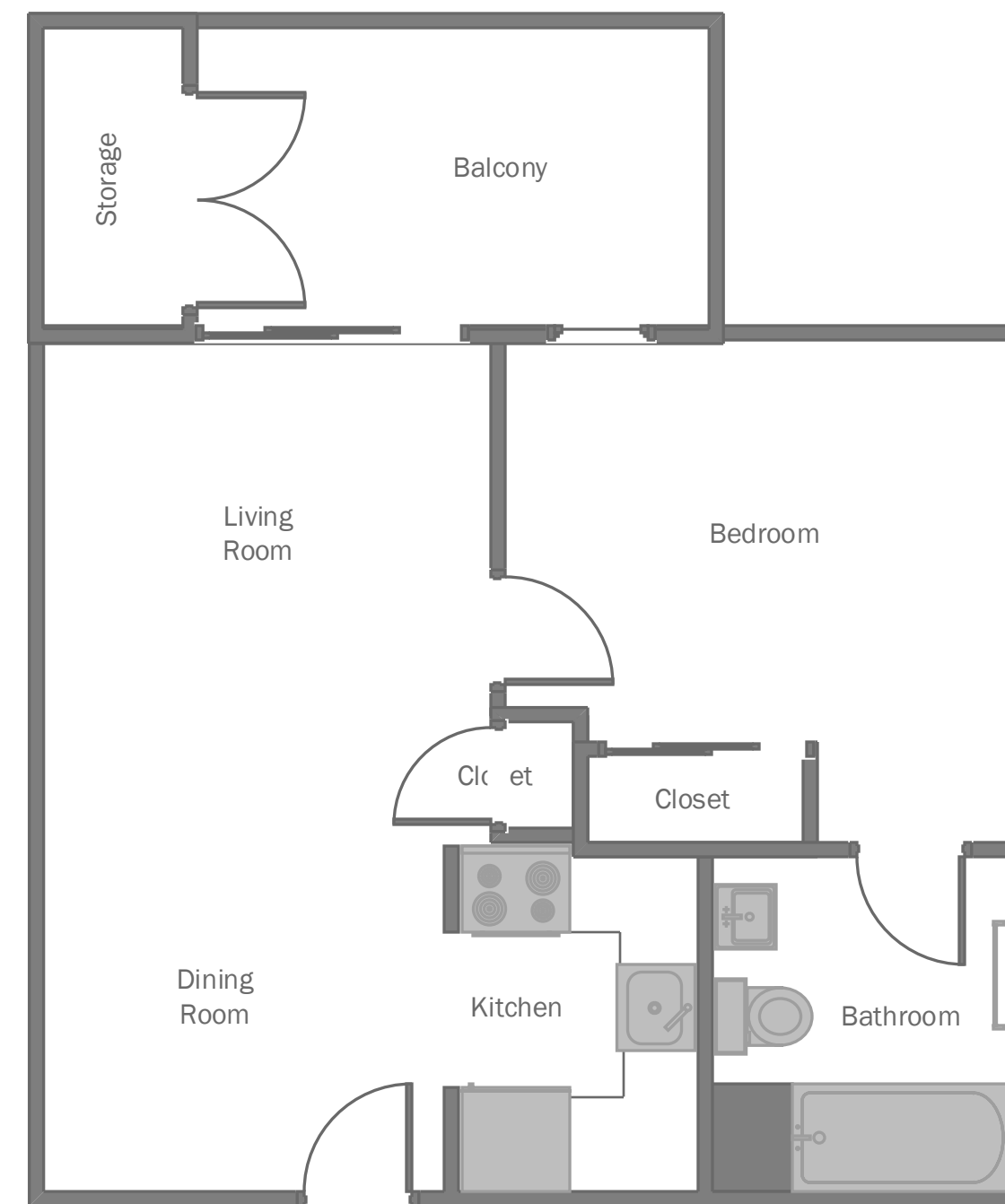


North Housing Studio
(360 sq. ft.)



North Housing 1 Bedroom/1 Bathroom
(585 sq. ft.)



Claremont School of Theology Apartment Floor Plans

North Housing Studio: 360 sq. ft.

North Housing 1 BR/1 Bath: 585 sq. ft.

North Housing 2 BR/1 Bath: 780 sq. ft.

North Housing 3 BR/2 Bath: 1,160 sq. ft.

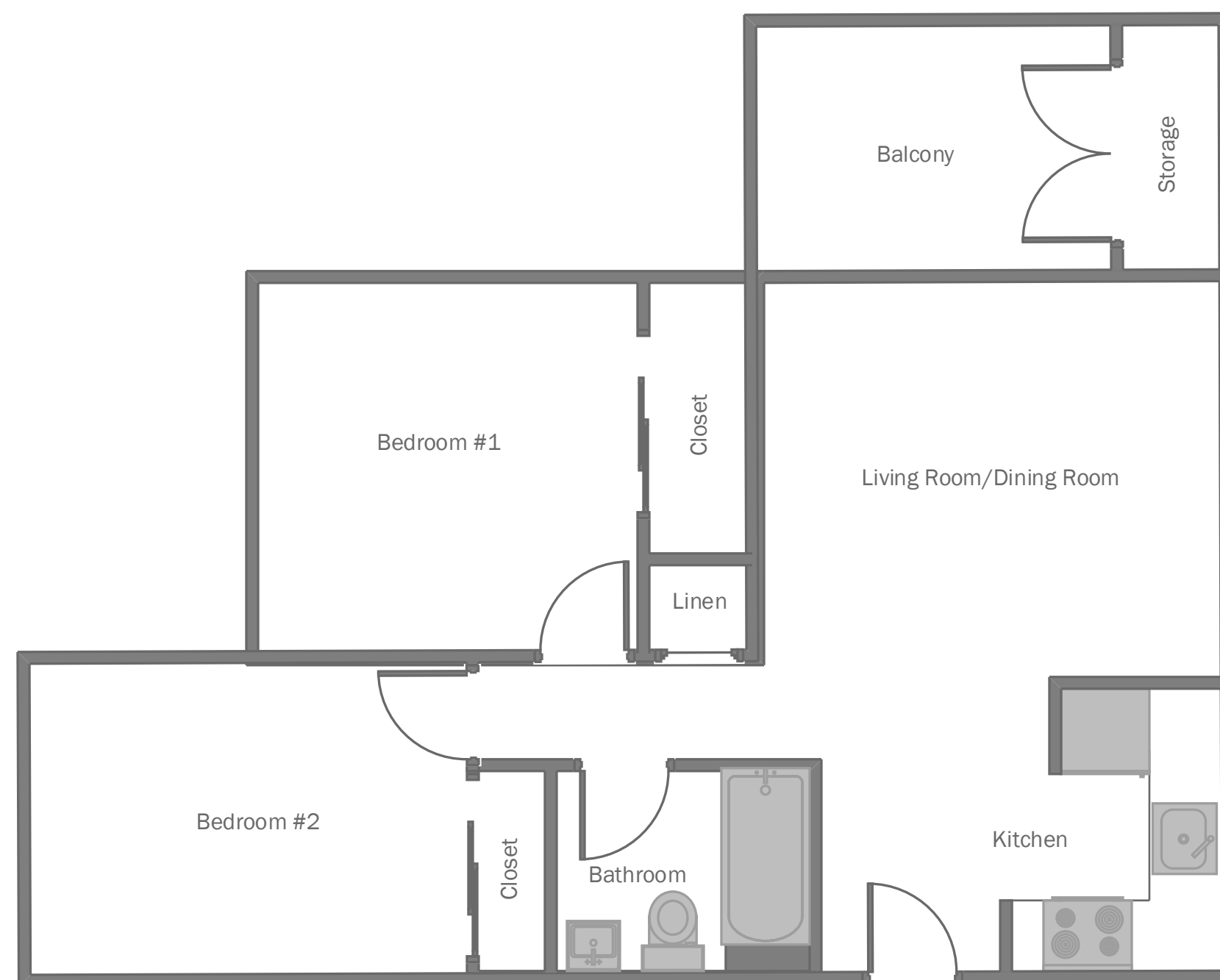
North Housing 2 BR/2 Bath/2 Kitchen: 1,170 sq. ft.

(compromised of two 1 BR/1 Bath apartments joined by a linking door)

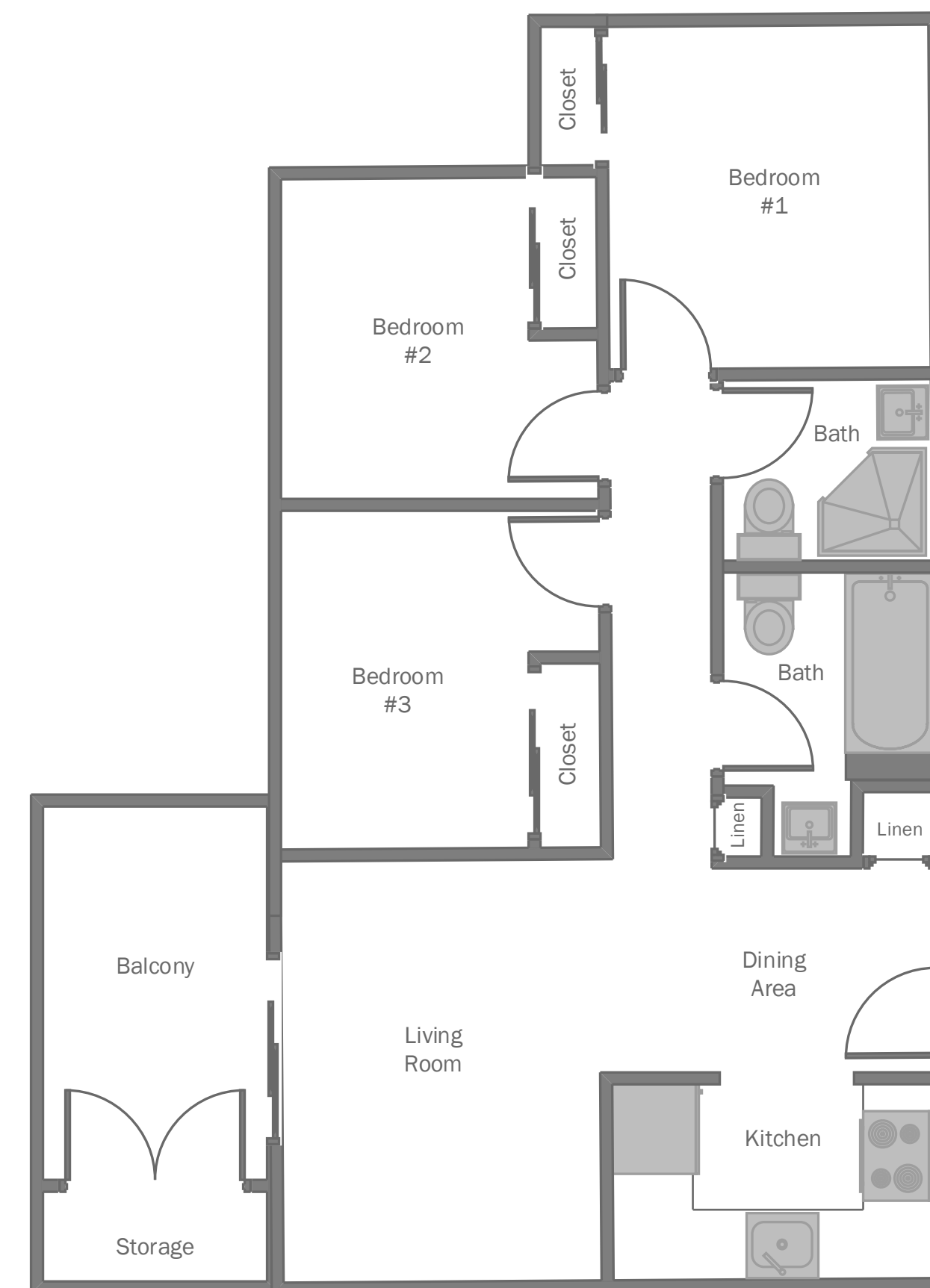
West Housing 1 BR/1 Bath: 540 sq. ft.

West Housing 2 BR/1 Bath: 780 sq. ft.

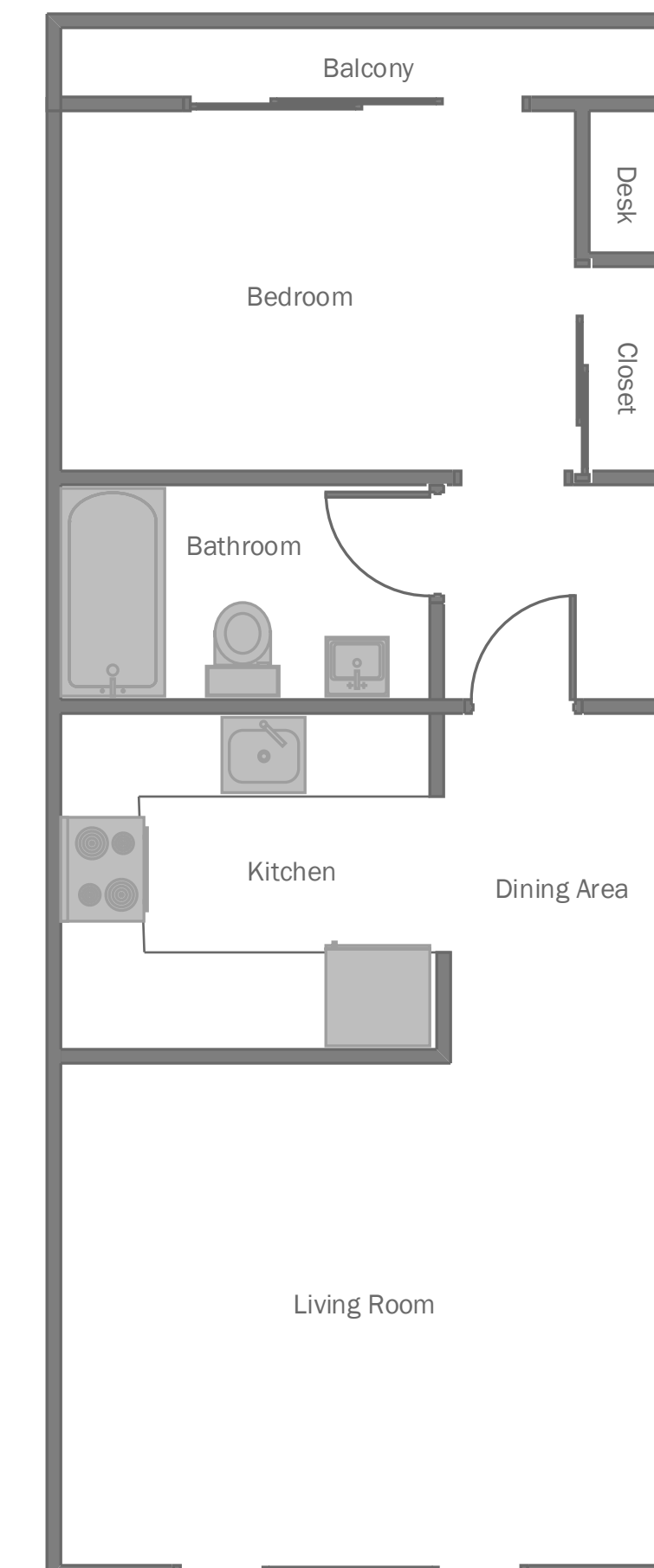
North Housing 2 Bedroom/1 Bathroom
(780 sq. ft.)



North Housing 3 Bedroom/2 Bathroom
(1,160 sq. ft.)



West Housing
1 Bedroom/1 Bathroom
(540 sq. ft.)



West Housing
2 Bedroom/1 Bathroom
(780 sq. ft.)

